

# GODREJ ARIA

SECTOR 79, GURUGRAM

## A PERFECT VIEW TO A PERFECT LIFE

Enjoy every day with uninterrupted views\* of the beautiful Aravallis. Godrej Aria, your opportunity to create a perfect life.



\* Views from limited units only





# GODREJ ARIA

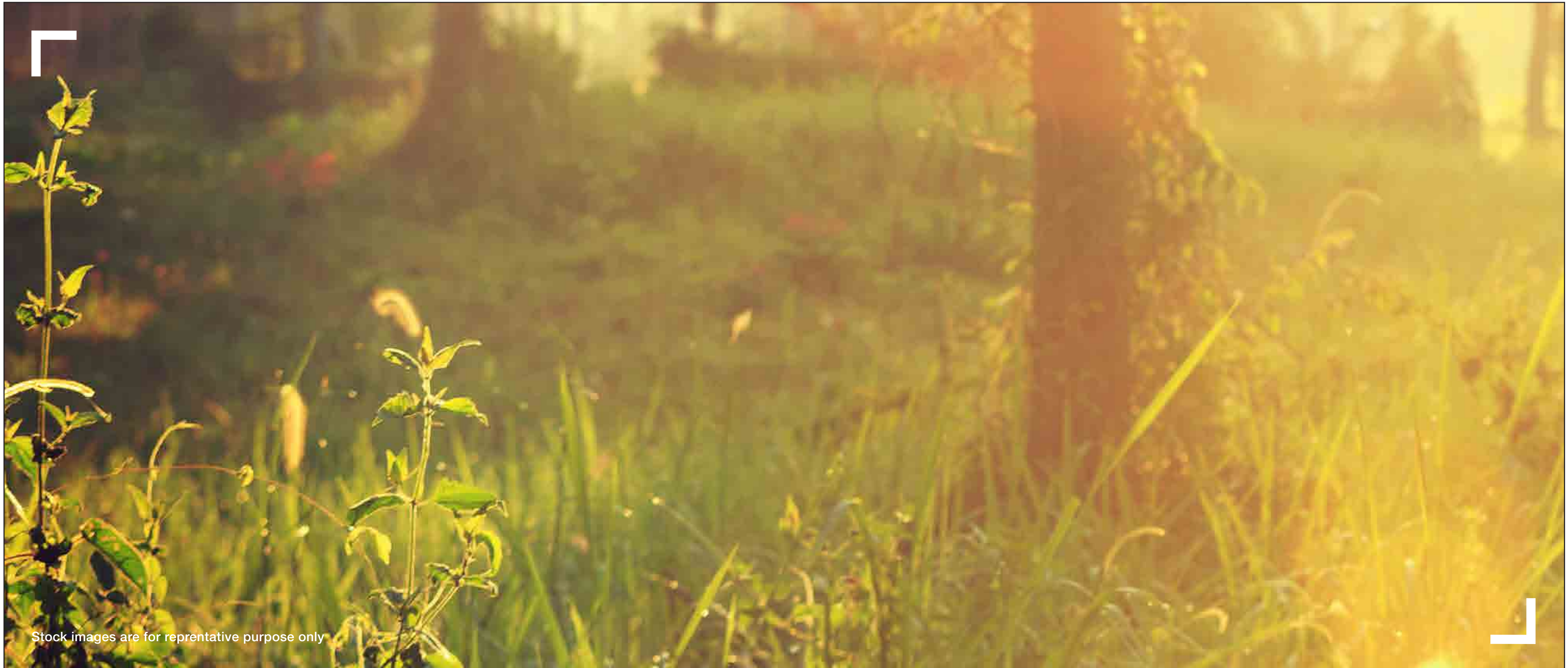
SECTOR 79, GURUGRAM



Actual image of the elevation







Stock images are for repretative purpose only

# PERFECT WAY OF LIFE

Begin every day with the perfect morning. Wake up to spectacular views\* of the resplendent Aravallis or lose yourself in Open & Green Spaces. Spead over 28328 sq.m., Godrej Aria has 6 magnificent towers, standing tall amidst lush landscaped courtyards. The Amenities at Club O<sub>2</sub> will keep you busy with the activities that complement your perfect lifestyle.

\* Views from selected units only



LEGENDS

- 1 Entrance Plaza
- 2 Drop-Off Points
- 3 Cricket Pitch
- 4 Yoga Court
- 5 Tennis Court
- 6 Elder's Seating Area
- 7 Landscaped Courtyard
- 8 Swimming Pool
- 9 Jogging Path / Cycle Track
- 10 Amphitheatre
- 11 Landscaped Terrace
- 12 Children's Play Area
- 13 Dog's Corner
- 14 School
- 15 Club O<sub>2</sub>
- 16 Badminton Court
- 17 Half Basketball Court

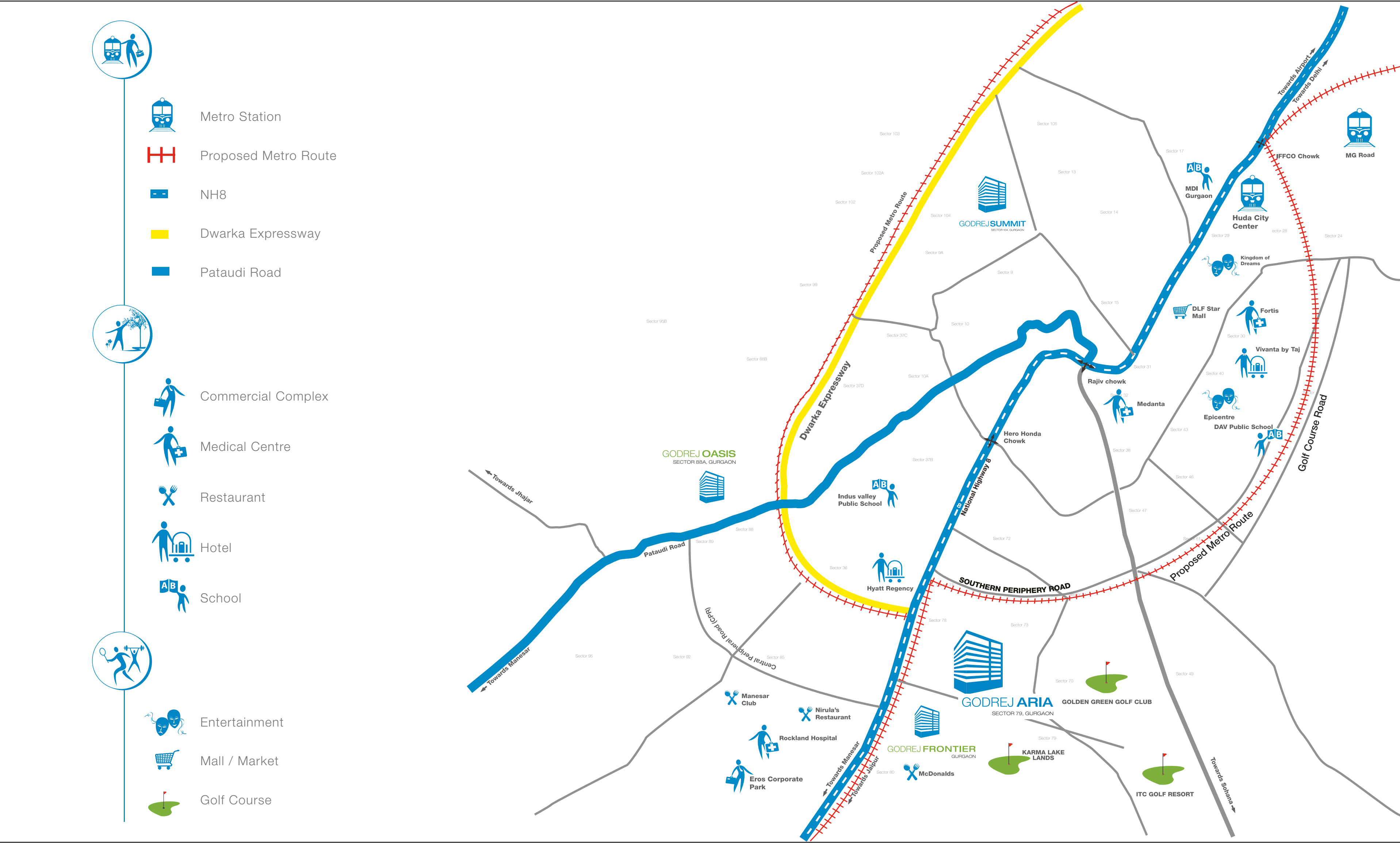




## PERFECT CONNECTIVITY

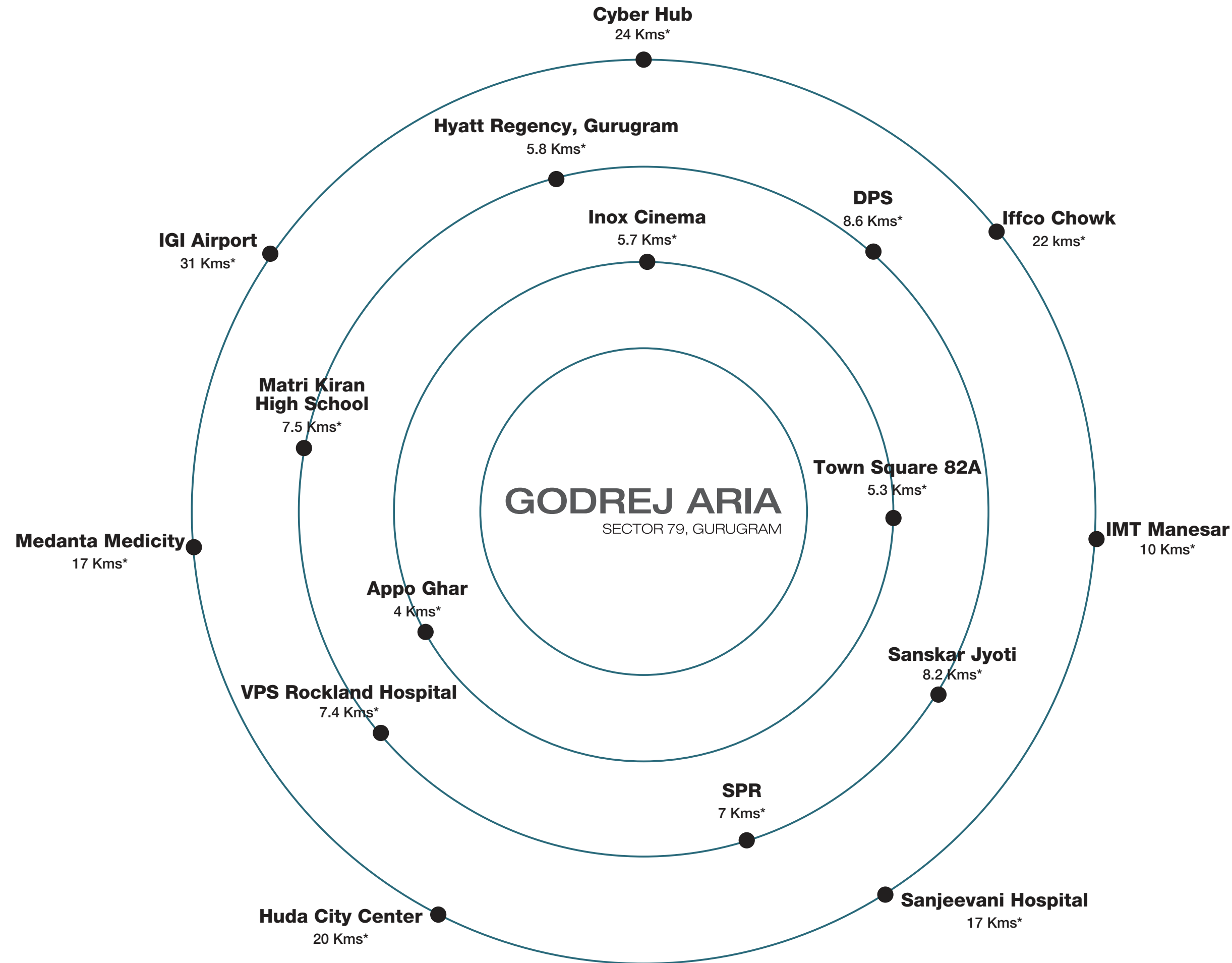
Life at Godrej Aria is perfectly complemented by seamless connectivity to all the addresses important to you. Located very close to NH8 on New Golf Course Road, Godrej Aria offers a host of advantages that makes both leisure and travel simpler, with proximity to golf courses, restaurants and hotels like Hyatt Regency. The IFFCO Chowk, the commercial hub of Gurgaon, well connected via NH8 & SPR.





\*Map not to scale

# THE BEST OF INFRASTRUCTURE NEARBY



\*Distance based on google maps. For illustration purpose only.





## PERFECT JOYS OF LIFE

The breathtaking views\* of the Aravallis, well-designed interiors and landscaped courtyards bring together all the aspects of perfect living at Godrej Aria.





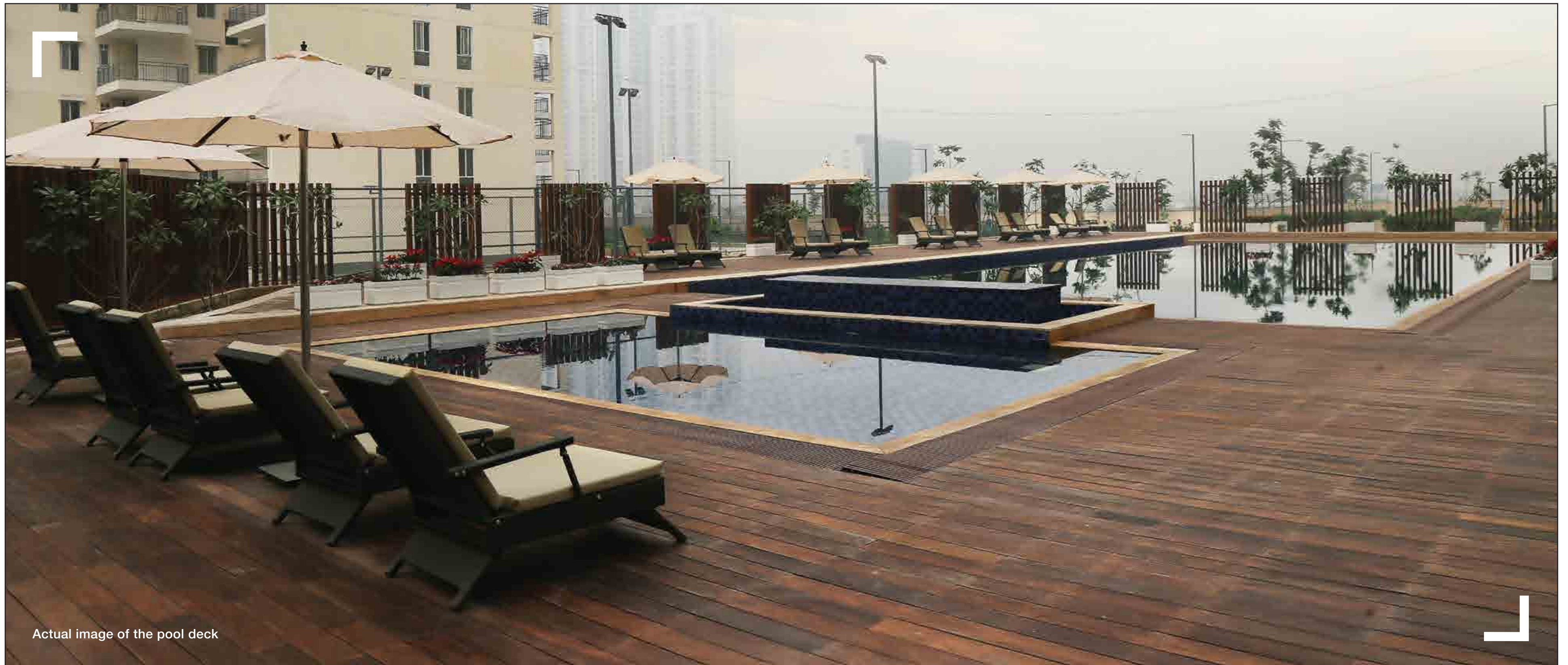
# PERFECT INTERIORS

Homes open from three sides# provide well-ventilated and naturally lit spaces for everyday living. Double height entrance\* lobbies add grandeur to your lifestyle.

\*In all towers except for Tower 12. #From every home except some units at the connecting junction of Tower E & F. The fixtures, furniture shown in the photographs/layout plan are illustrative and indicative in nature and are for representational purposes only and do not form part of the standard specifications/ amenities/services to be provided in the unit.



「ONE-OF-A-KIND CLUBHOUSE  
**CLUB O<sub>2</sub>**」



Actual image of the pool deck

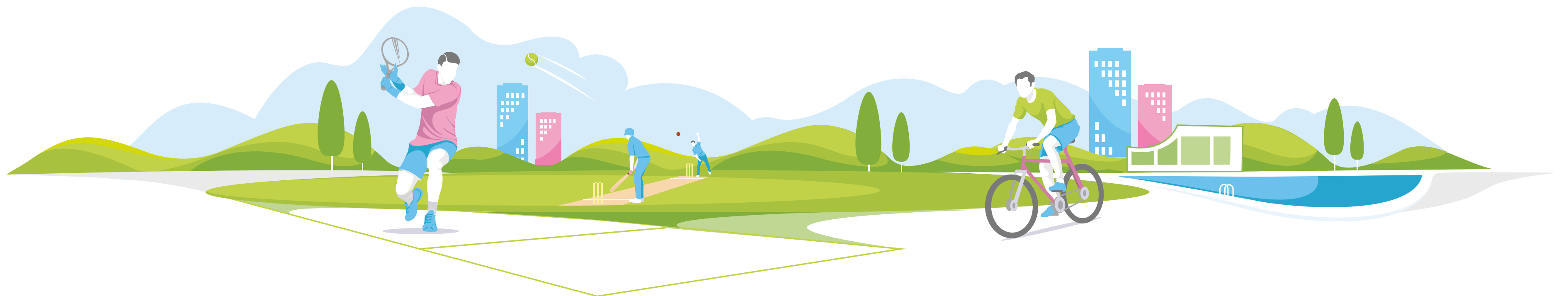
## PERFECT RELAXATION

Enjoy a light conversation with your loved ones while you walk around in the sprawling landscapes courtyards. The clubhouse is located adjacent to the courtyards offering a host of activities and amenities for you to spend quality time with family and friends.



## PERFECT REJUVENATION

Be it indoors or out, we've ensured that your life is packed with activities wherever you go. At Godrej Aria, you will have every amenity and activity to make the most of each day. The Club O<sub>2</sub> provides you with both entertainment and leisure facilities.



# CLUB O<sub>2</sub>



**Multipurpose Hall** – Spacious avenue to engage with family and friends on special occasions



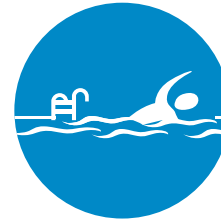
**Dogs' Corner** – When it's play time for your pets, you will find the perfect place to keep them happy.



**Indoor Games** – Enjoy a game of squash or table tennis. Family time will be fun with games like cards, carrom, board games and many more.



**Double Height Entrance** – Make a grand entrance into a world full of indulgence



**Swimming Pool<sup>^</sup>** – Take a dip or swim a few laps and feel refreshed. You can also relax at the pool side cafe.



**Business Centre** – A technologically-enabled zone as a private workspace



**Meditation and Yoga Centre** – A place with the perfect ambience to spend some peaceful time with yourself.



**Cricket Practice Pitch<sup>\*</sup>** – A space to polish your cricketing skills or to coach your little one.



**Spa** – Relaxation space to pamper yourself after a hard day's work



**Juice Bar** – A thirst-quenching stop beside the pool deck



**Gymnasium and Spa** – Stay fit with your daily work-out at the fully equipped gymnasium. You can also relax at the spa.



<sup>\*</sup>Cricket pitch is present in club

<sup>^</sup>Swimming Pool shall be operational in the summer season upon application to be made by the developer as per the applicable laws



# PROJECT HIGHLIGHTS



**Children's Play Area** – For kids to create their childhood memories.



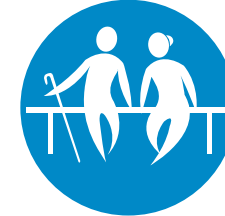
**Amphitheatre** – An ideal entertainment centre for social events and get-togethers.



**Tennis Court** – Step out for a game of tennis with the scenic Aravallis in the background.



**Cycling and Jogging Track** – Feel the breeze while you enjoy a ride on your bicycle or a jog at the well-designed cycling and jogging track.



**Elders' Seating Area** – A perfect place for elders to sit back and enjoy a conversation along with great company.



**Half Basketball Court** – Enjoy an action-packed game of basketball with your friends.





Actual image of the clubhouse



# COMFORT & CONVENIENCES AT YOUR DOORSTEP



GROCERY CART



CONCIERGE DESK



SHUTTLE SERVICE\*



SPORTS ACADEMY



QUICK RESPONSE TEAM



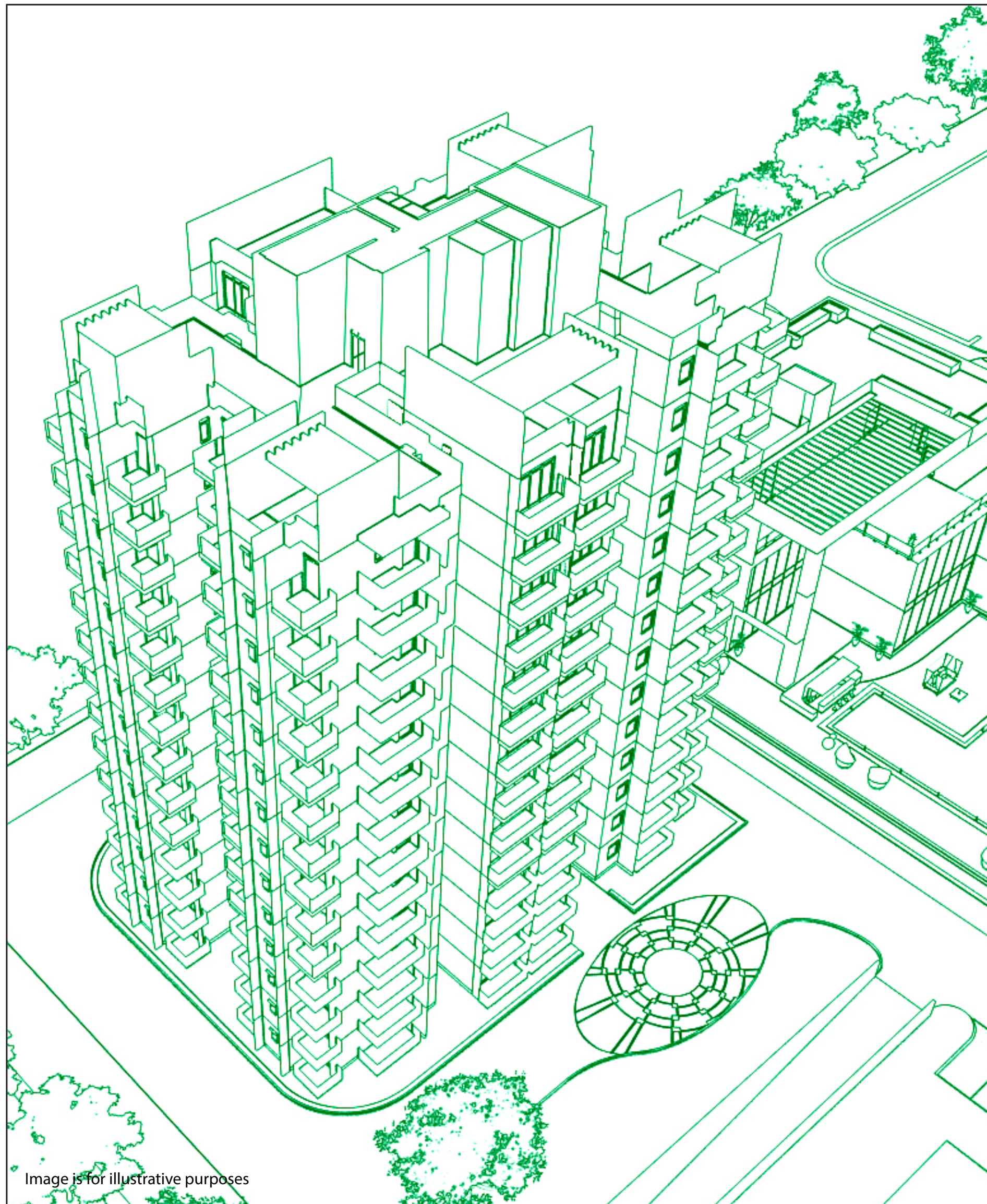


Image is for illustrative purposes

## PERFECT BALANCE

Sustainability is of prime importance at Godrej Aria. Our endeavour to be environmentally responsible includes:



### RAINWATER HARVESTING SYSTEM

Saves more natural water for future use and vastly improves water sustainability.



### SOLAR PHOTOVOLTAIC SYSTEM

Making use of solar energy, thereby reducing electricity bills.



### GREY WATER TREATMENT

Used water is treated and safely reused, thus reducing use of new water.



### HEALTH-SAFE PAINTS AND ADHESIVES

Low Volatile Organic Compound (VOC) paints, adhesives and sealants for interior fixtures ensure your health and safety.



### WATER-EFFICIENT FIXTURES

This simple addition ensures that water consumption is optimised and water bills are reduced.



### RECYCLED CONSTRUCTION MATERIALS

Recycled and locally produced materials have been used, thereby reducing carbon dioxide emissions.



### SMART LIGHTING

CFLs and LEDs are used in external and common lighting areas to promote low electric consumption.



### WASTE SEGREGATION SYSTEM

Wet and dry waste management has been implemented to ensure that waste is managed in an eco-friendly manner.